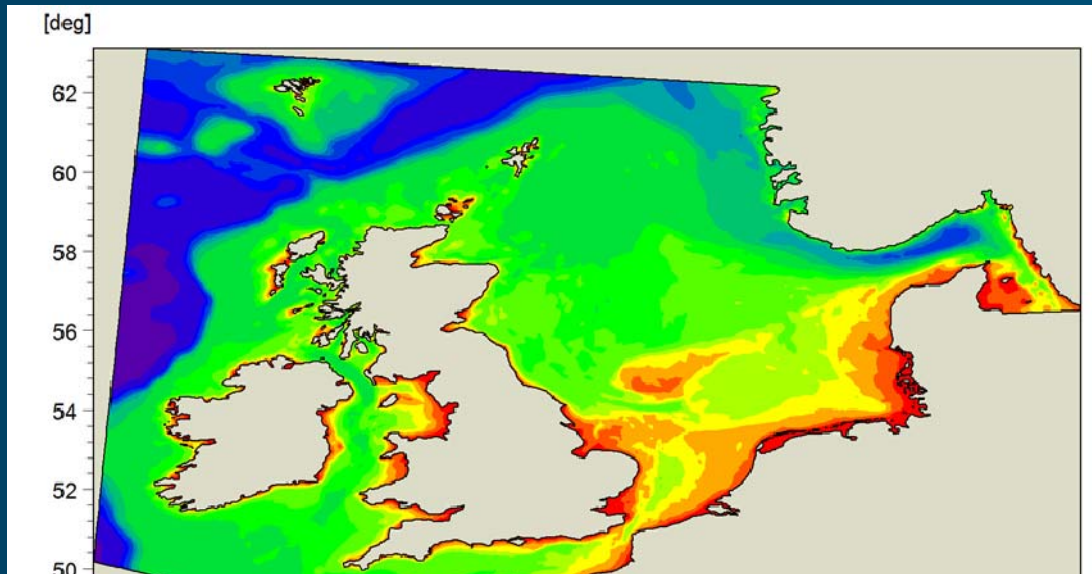


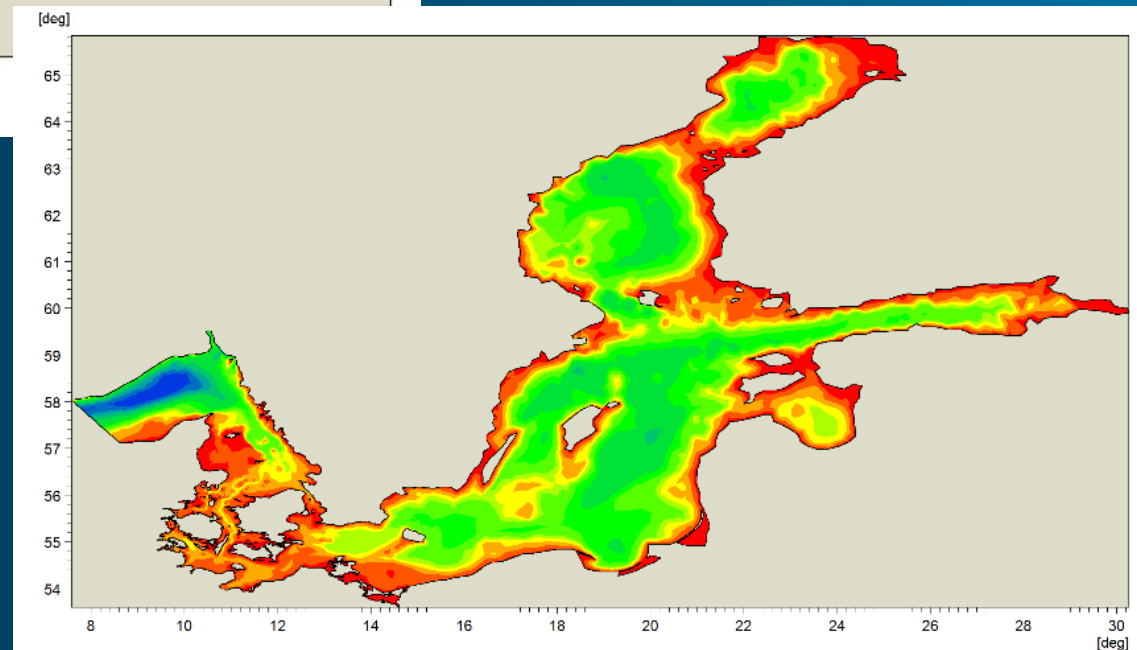
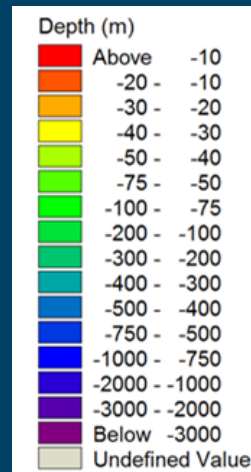
FerryBox data in ecosystem modelling

Rikke Margrethe Closter and Anders Christian Erichsen
rmc@dhigroup.com

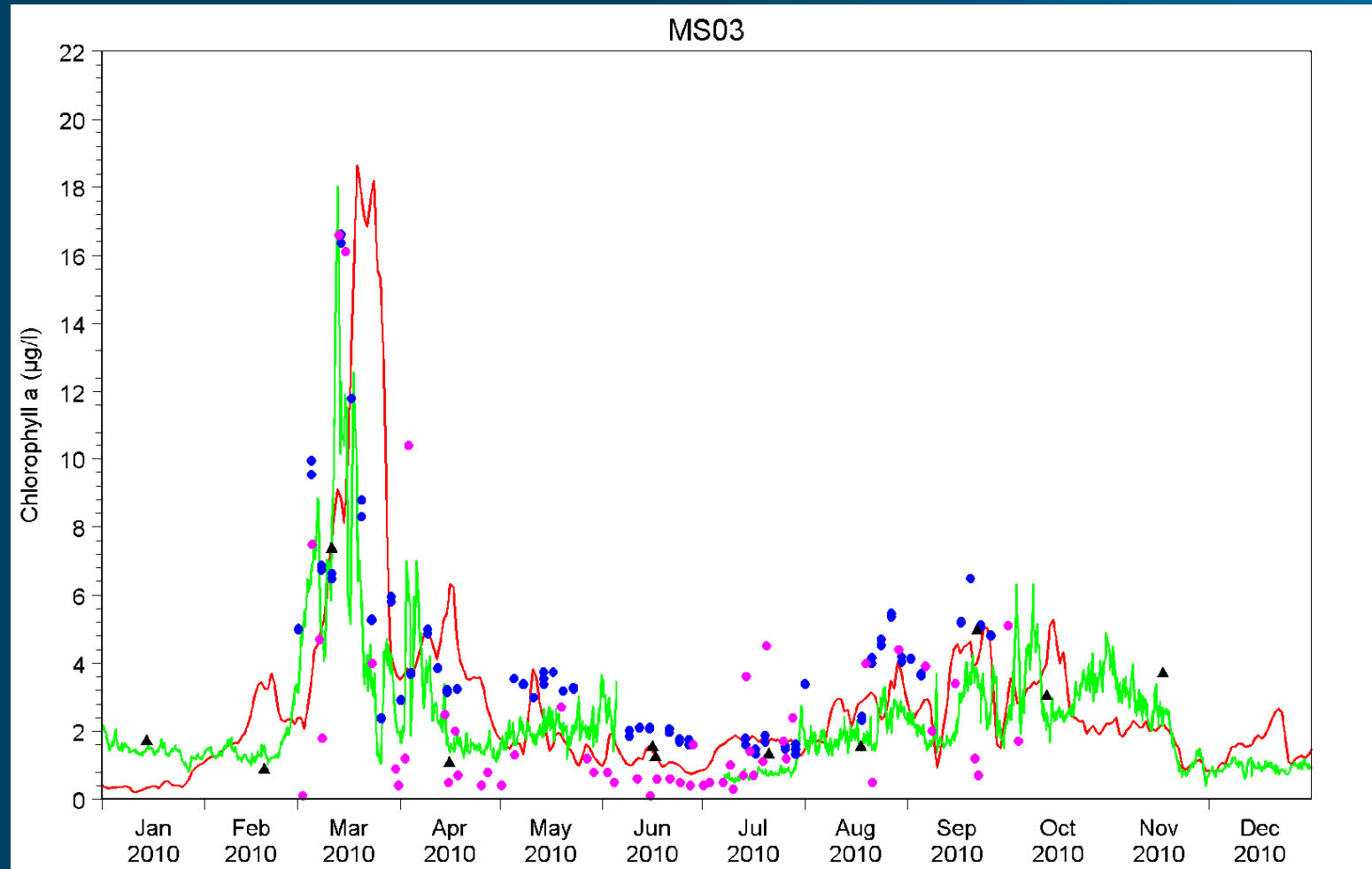
Examples of model domains – Baltic Sea and North Sea



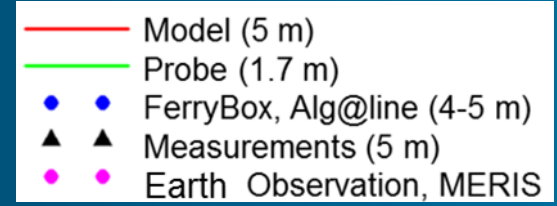
- Applied ecosystem modelling is an important part of DHI's services
- Carried out for private and public customers, or in partnerships with other Danish consultants.



Do different types of measurements tell the same story?

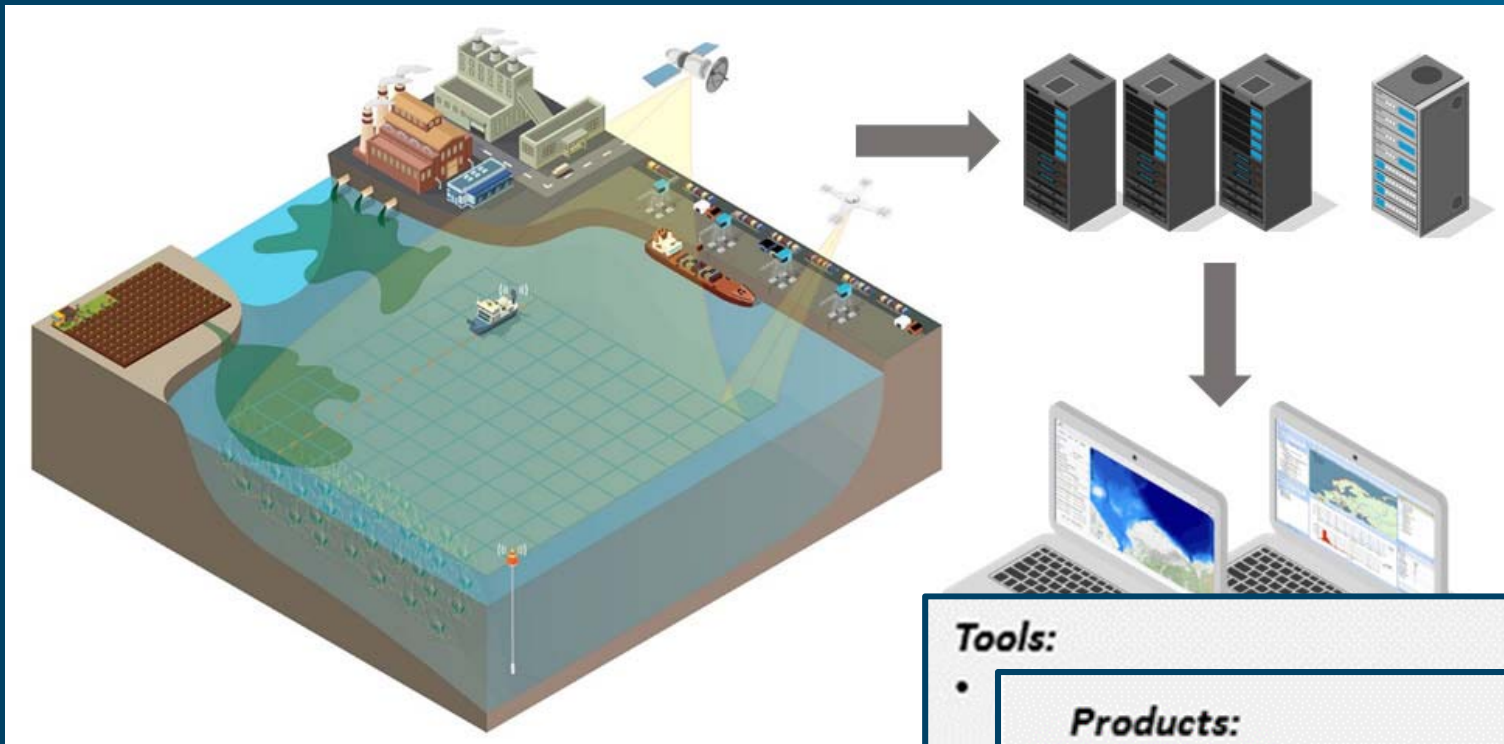


The ecosystem models rely on high quality data. Improves the real-time description and predictions of the marine environment, and thus the information basis for management.



SeaStatus

Innovative Technologies for Quantification of Sea Status



The SeaStatus project exploits the potential of combining the increasing amount of new environmental data-rich sources like on-line sensors, remote sensing and ferry-box data with ecosystem knowledge and modelling.

Tools:

-
-
-
-

Products:

-
-
-

Services:

- Methodology for introducing uncertainty
- Recommendations on methods for specific use-cases
- EIA aligned with new directive
- Intelligent ecosystem management

Thank you!

Partners



DTU Compute



AARHUS
UNIVERSITY



COWI

RAMBOLL



Miljø- og Fødevareministeriet
Styrelsen for Vand- og Naturforvaltn



Vejdirektoratet